



TOWER BRIDGE MEWS

TOWER BRIDGE ROAD, LONDON

TOWER BRIDGE ROAD

An exceptional
development of
6 apartments and
3 townhouses

Located in the borough of
Southwark, in Zone 1, close
to the vibrant Bermondsey
and Borough Market areas.



Tower Bridge Mews is located in close proximity to The Shard and the City of London Financial District.

Please note: Computer generated images and photography throughout this brochure are intended for illustrative purposes and should be treated as general guidance only.

THE TOWN HOUSES



Nestled within a secure, gated courtyard to the rear of the development, sits our three luxury townhouses. These sizeable, well spec'd homes are split across a number of floors and benefit from a mixture of garden/roof terrace areas, a unique offering combining exceptional private outdoor/indoor space whilst still being in the heart of London just off Tower Bridge Road.

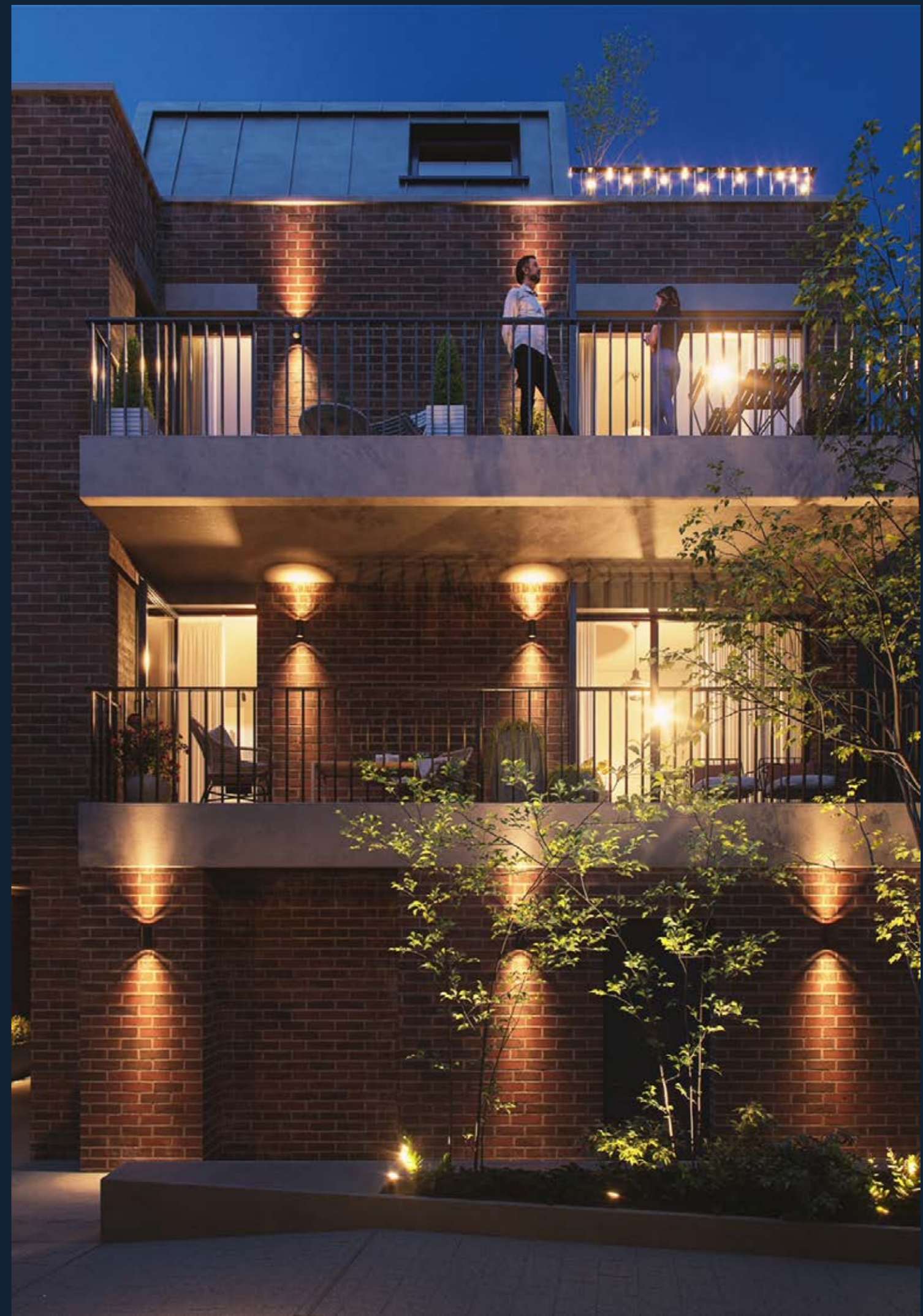




THE APART- MENTS



Tower Bridge Mews includes a small collection of just 6 spacious apartments located in a quiet and tranquil enclave just a 20 min walk into the city of London. Each home will be finished to the standard that has become the Farleigh hallmark in their developments across the UK. The apartments are spacious and with an emphasis on light, clever space planning and design.



Designed in accordance with "Secure By Design" regulations, Tower Bridge Mews has one private gated entrance with controlled intercom system.



CENTRALLY LOCATED

Tower Bridge Mews is located within the London Borough of Southwark immediately to the south of the junction of Bermondsey Street and Tower Bridge Road, about 800m south of the River Thames.



TATE MODERN

ST PAULS

THE SHARD

LONDON
BRIDGE
STATION

BERMONDSEY
STREET

THE CITY

TOWER BRIDGE

TOWER
BRIDGE MEWS

ON YOUR DOOR STEP

Bermondsey Street has undergone significant regeneration in recent years and now features a rich mix of businesses including trendy micro-breweries, gin distilleries, art galleries, independent cafes and artisan shops.

To the north of the Mews lies the popular Bermondsey Square. Redeveloped in 2006, the square now contains a boutique hotel, apartments, offices, restaurants, an independent cinema and most notably hosts the Bermondsey Market every Friday, offering a variety of antiques, food, fashion and craft.



This Mews development is an appealing location and lifestyle choice for those who will appreciate its close proximity to Bermondsey and Borough Market which are two of the capital's most exciting communities.

Bermondsey made The Times Best Places list for six years in a row and has been chosen by Country Life as the best place to live in London for food, calling it "the capital's gourmet hub".

Bermondsey Street is a short walk and is famed for its fashionable bars, restaurants, the iconic White Cube art gallery and the Fashion and Textile Museum as well as an abundance of independent shops.

London's famous food and drink experience Borough Market is noted for its specialist British and international produce and is a ? minute walk away.

With London Bridge and the City within walking distance, plus excellent cycling routes to the West End and beyond, SE1 is rapidly becoming the new focus for living and working.

BERMONDSEY & BOROUGH MARKET



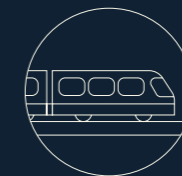


TRANSPORT



14 mins walk

Borough Underground Station
(Northern Line)



17 mins walk

London Bridge Station and
Underground Station (Northern
and Jubilee Lines)



29 mins

Direct train service from London
Bridge Station to Gatwick Airport
every 10 minutes.



5 mins walk

Several bus services operate
within a 5 minute walk, with stops
along Tower Bridge Rd, Grange
Rd, Long Lane and Abbey St.



30 mins walk

The City

EDUCATION

SE1 is very well served by numerous respected primary, secondary and grammar schools as well as a number of popular and highly rated Universities and Colleges.

King's College London

Southwark College

**London School of Economics
and Political Science**

University College London

Imperial College

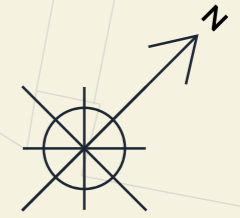
University of Westminster

Southbank University

University College of Osteopathy



SITE PLAN



TOWARDS
THE CITY



THE MEWS HOUSES

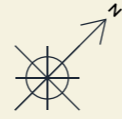
THE APARTMENTS

ENTRANCE

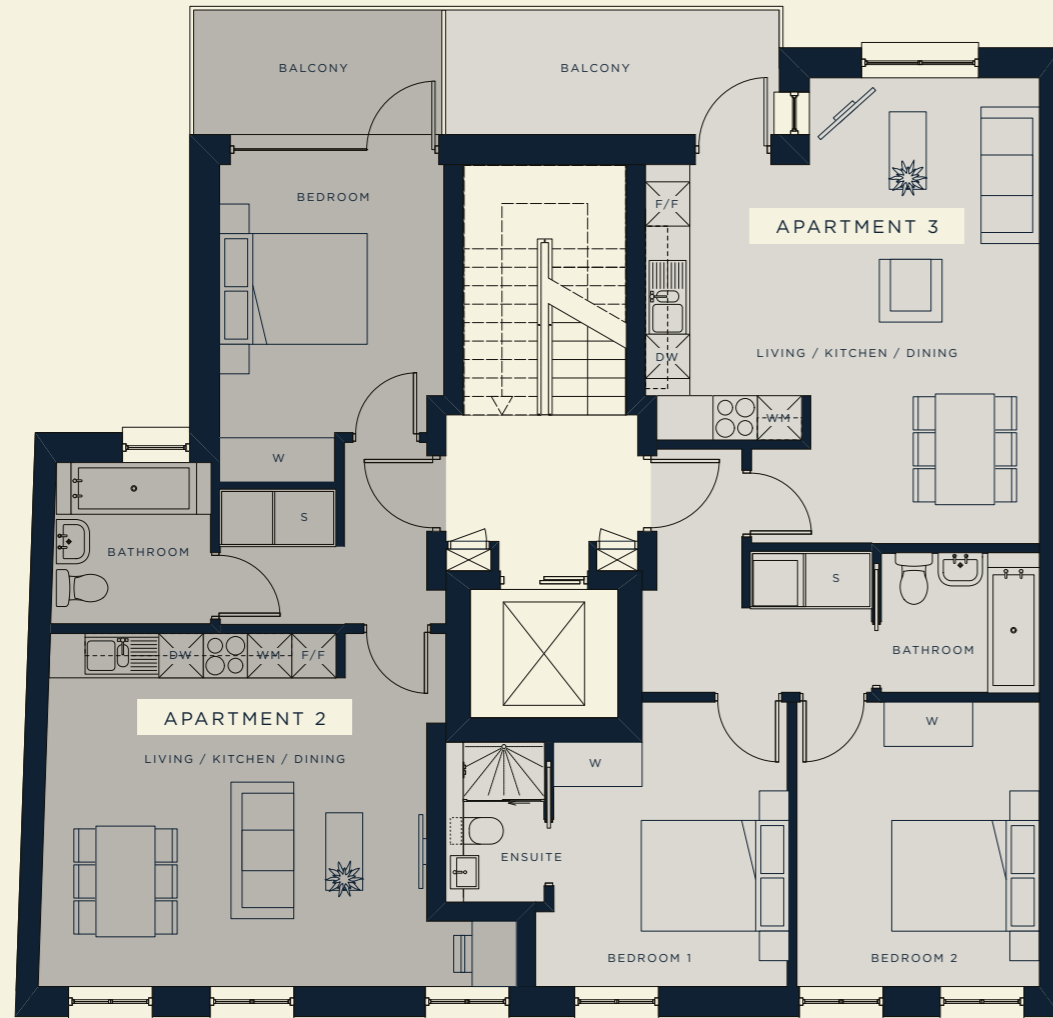
TOWER BRIDGE ROAD

THE APARTMENTS —FIRST FLOOR

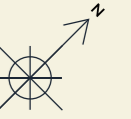
THE APARTMENTS —SECOND FLOOR



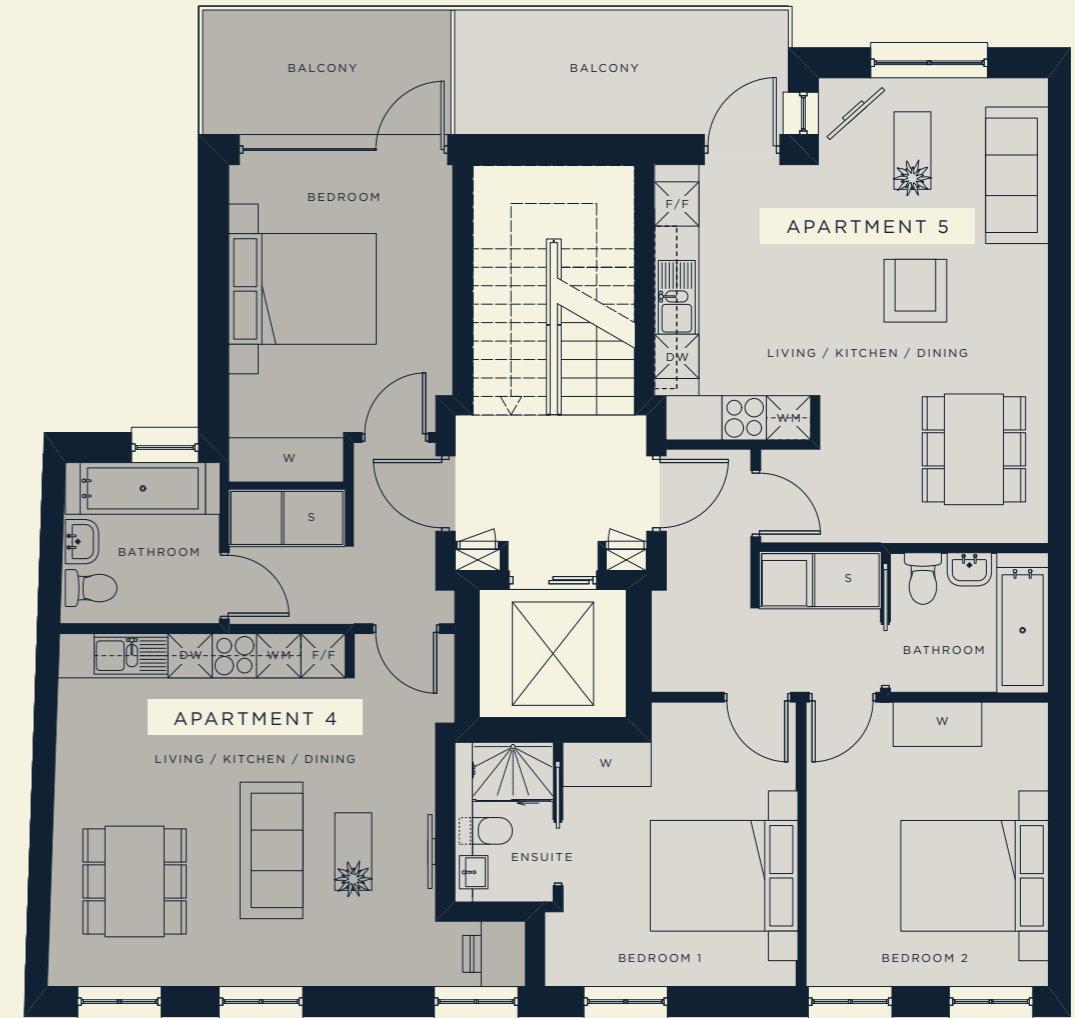
TOWARDS
THE CITY



TOWER BRIDGE ROAD



TOWARDS
THE CITY



TOWER BRIDGE ROAD

APARTMENT 2	METRES	FEET
LIVING/KITCHEN/DINING	5.1m x 4.7m	16'7" x 15'4"
BEDROOM	3m x 4.3m	9'8" x 14'1"
BATHROOM	2.1m x 2.1m	6'9" x 6'9"
BALCONY	1.6m x 3.3m	5'2" x 10'8"
TOTAL AREA*	538 sq ft	50 sq m

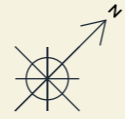
APARTMENT 3	METRES	FEET
LIVING/KITCHEN/DINING	5.3m x 6.3m	17'4" x 20'6"
BEDROOM 1	3.4m x 3.8m	11'2" x 12'5"
BEDROOM 2	3m x 3.8mm	9'8" x 12'5"
BATHROOM	1.9m x 2.1m	6'2" x 6'9"
ENSUITE	1.3m x 2.1m	4'3" x 6'9"
BALCONY	1.6m x 4.4m	5'2" x 14'4"
TOTAL AREA*	764 sq ft	71 sq m

APARTMENT 4	METRES	FEET
LIVING/KITCHEN/DINING	5.1m x 4.7m	16'7" x 15'4"
BEDROOM	3m x 4.3m	9'8" x 14'1"
BATHROOM	2.1m x 2.1m	6'9" x 6'9"
BALCONY	1.6m x 3.3m	5'2" x 10'8"
TOTAL AREA*	538 sq ft	50 sq m

APARTMENT 5	METRES	FEET
LIVING/KITCHEN/DINING	5.3m x 6.3m	17'4" x 20'6"
BEDROOM 1	3.4m x 3.8m	11'2" x 12'5"
BEDROOM 2	3m x 3.8mm	9'8" x 12'5"
BATHROOM	1.9m x 2.1m	6'2" x 6'9"
ENSUITE	1.3m x 2.1m	4'3" x 6'9"
BALCONY	1.6m x 4.4m	5'2" x 14'4"
TOTAL AREA*	764 sq ft	71 sq m

*Does not include outside space

THE APARTMENTS —THIRD FLOOR

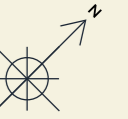


TOWARDS
THE CITY



TOWER BRIDGE ROAD

THE MEWS —GROUND FLOOR APARTMENT



TOWARDS
THE CITY



TOWER BRIDGE ROAD

APARTMENT 6	METRES	FEET
LIVING/KITCHEN/DINING	5.3m x 5.4m	17'4" x 17'7"
BEDROOM 1	4.4m x 2.7m	14'4" x 8'9"
BEDROOM 2	3.9m x 2.5m	12'8" x 8'2"
SHOWER ROOM	3.3m x 1.4m	10'8" x 4'6"
UTILITY	1.8 x 3.2m	5'9" x 10'5"
TERRACE	4m x 2.8m	13'1" x 9'2"
TOTAL AREA*	814 sq ft	75.6 sq m

APARTMENT 1	METRES	FEET
LIVING/KITCHEN/DINING	6.6m x 4m	21'7" x 13'1"
BEDROOM 1	3.6m x 3.3m	11'8" x 10'8"
BEDROOM 2	3m x 2.6m	9'8" x 8'5"
BATHROOM	2.9m x 1.7m	9'5" x 5'6"
GARDEN	6.6m x 3.4m	21'7" x 11'5"
TOTAL AREA*	672 sq ft	62.4 sq m

*Does not include outside space

THE MEWS HOUSE 1

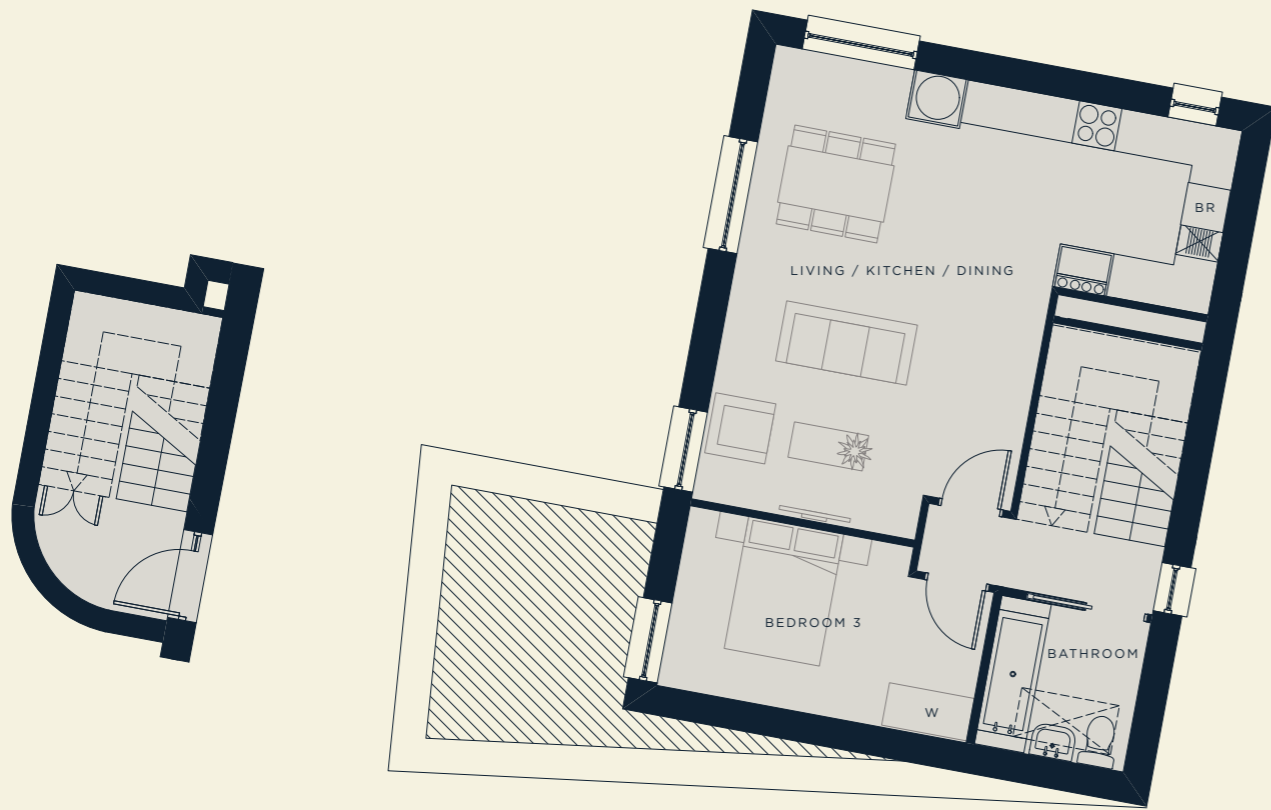


GROUND FLOOR

FIRST FLOOR

SECOND FLOOR

ROOF GARDEN



HOUSE 1	METRES	FEET
LIVING/KITCHEN/DINING	6.6m x 6.4m	21'7" x 21'0"
BEDROOM 3	5.1m x 3.6m	16'7" x 11'8"
BATHROOM	2.1m x 2.1m	6'9" x 6'9"

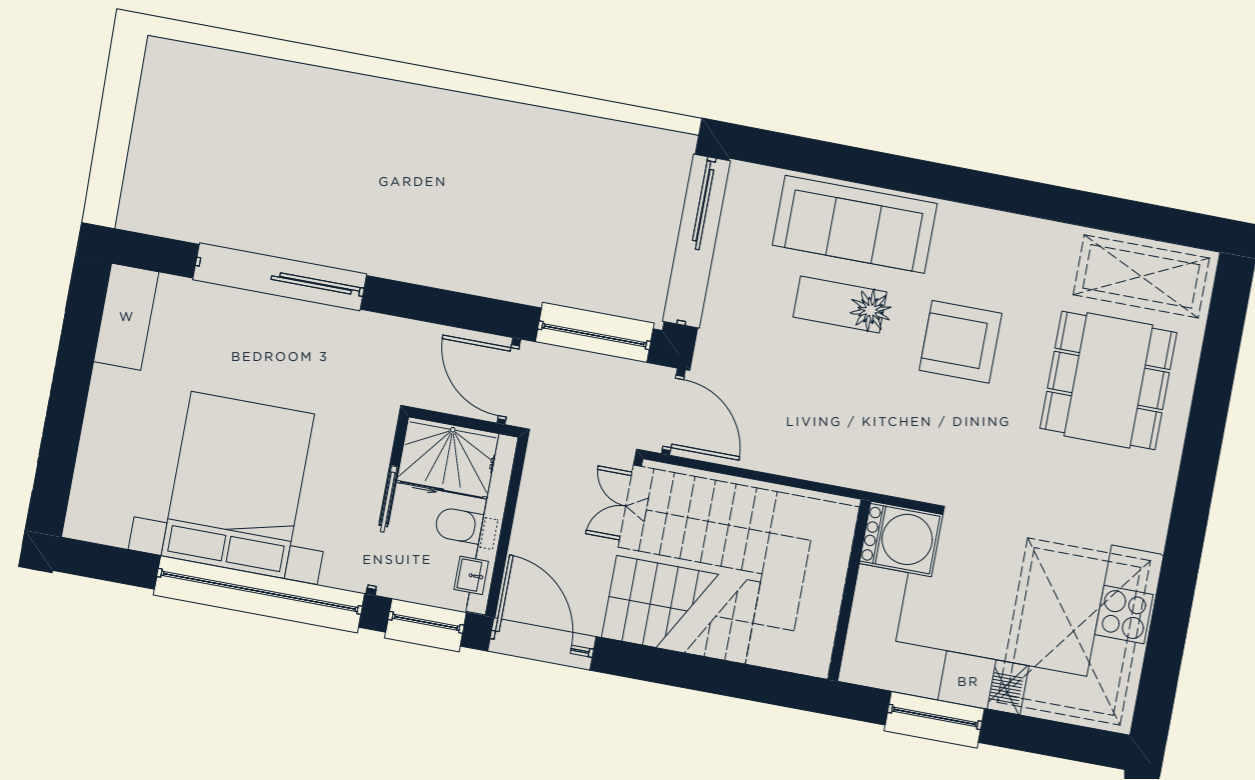
	METRES	FEET
BEDROOM 1	4.3m x 2.5m	14'1" x 8'2"
BEDROOM 2	3.2m x 3.7m	10'5" x 12'1"
ENSUITE	1.3m x 2.6m	4'3" x 8'5"
ROOF GARDEN	5.5m x 4.1m	18'0" x 13'5"
TOTAL AREA*	1350 sq ft	125.4 sq m

*Does not include outside space

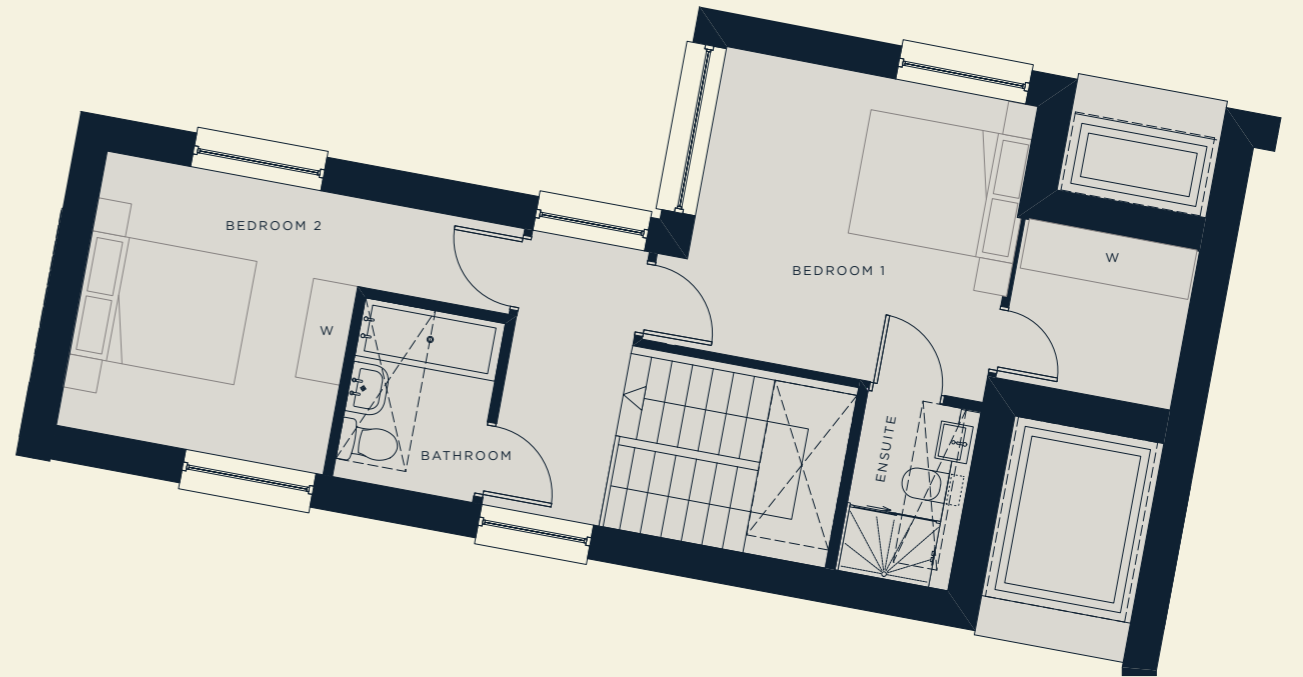
THE MEWS HOUSE 2



GROUND FLOOR



FIRST FLOOR



HOUSE 1	METRES	FEET
LIVING/KITCHEN/DINING	5.9m x 5.8m	19'4" x 19'0"
BEDROOM 3	3.7m x 3.3m	12'1" x 10'8"
ENSUITE	1.3m x 2.1m	4'3" x 6'9"
GARDEN	2.1m x 6.6m	6'9" x 21'7"

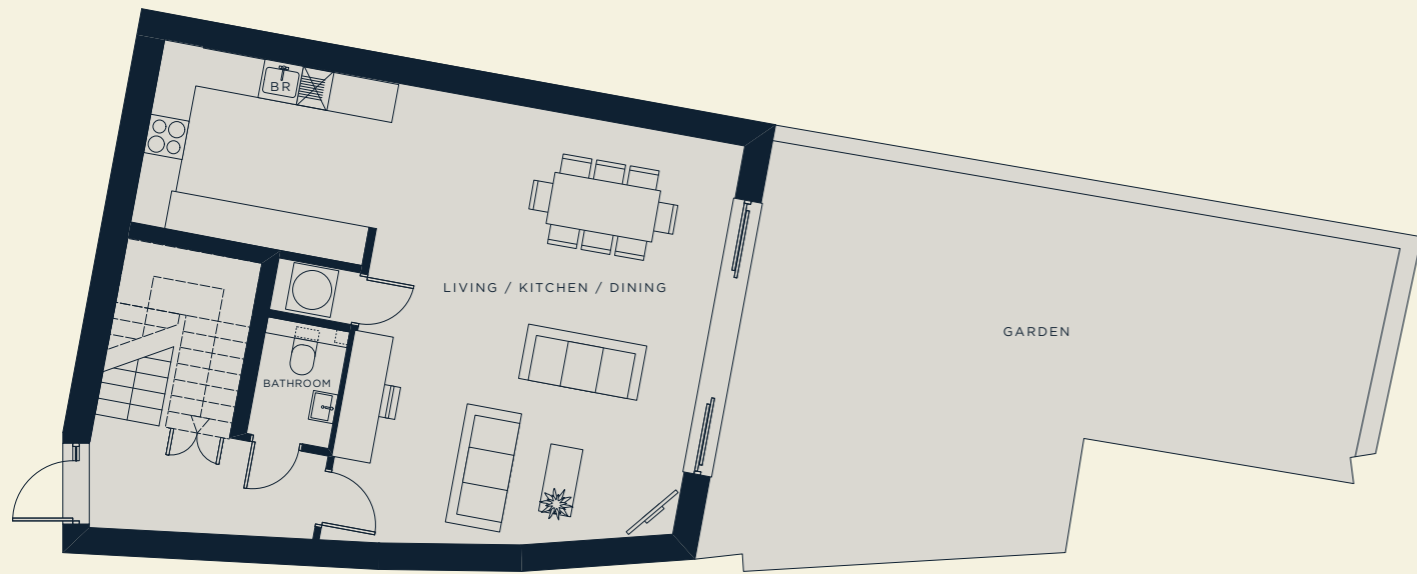
	METRES	FEET
BEDROOM 1	3.7m x 3.6m	12'1" x 11'8"
ENSUITE	1.3m x 2.1m	4'3" x 6'9"
BEDROOM 2	3.2m x 3.3m	10'5" x 10'8"
BATHROOM	1.7m x 2.1m	5'6" x 6'9"
TOTAL AREA*	1173 sq ft	109 sq m

*Does not include outside space

THE MEWS HOUSE 3



GROUND FLOOR



FIRST FLOOR



HOUSE 1	METRES	FEET
LIVING/KITCHEN/DINING	9m x 6.6m	29'5" x 21'7"
BATHROOM	1.2m x 1.8m	3'9" x 5'9"
GARDEN	4.5m x 10m	14'8" x 32'8"

	METRES	FEET
BEDROOM 1	4.2m x 3.2m	13'8" x 10'5"
ENSUITE	1.4m x 2.1m	4'6" x 6'9"
BEDROOM 2	3.6 x 3.3m	11'8" x 10'8"
BEDROOM 3	3m x 2.8m	9'8" x 9'2"
BATHROOM	2.1m x 2.2m	6'9" x 7'2"
TOTAL AREA*	1361 sq ft	126.4 sq m

*Does not include outside space

SPECIFICATION

GENERAL FEATURES

- Linear smooth wood internal moulded doors with satin wood paint finish.
- Chrome ironmongery. Diamond cut door handles.
- Walls painted in vinyl matte emulsion Farrow & Ball, Skimming Stone Colour.
- All ground floor units with double opening patio doors.
- Woodwork paint in white satin finish.
- Smooth plastered ceilings and walls.
- Multipoint locking front door sets.
- Burford contemporary skirting and architraves.

FLOORING

- Engineered light grey Barlinek oak st kitts floor (Hallways, living rooms and kitchens).
- Soft noble carpets with underlay in all bedrooms (And stairs in duplex apartments).
- Sintesis Calacatta marble effect white tiling in bathrooms & en suites.

KITCHENS

- Nobilia German Kitchens with gold effect trim.
- Siletstone quartz worktops, upstands and splash back behind hobs.
- Bosch stainless steel oven.
- Bosch gas hob with integrated extractor, with carbon filter.
- Integrated fridge-freezer.
- Integrated dishwasher (450mm or 650mm).
- Integrated washer dryer to kitchen or free standing Washer dryer to utility cupboard.
- Under cabinet LED lighting and skirting LED lights.
- Stainless steel underslung sink with Quooker chrome tap.

ELECTRICAL & LIGHTING

- Low voltage LED downlighters throughout.
- Low-level TV points with cable & satellite provision.
- Cat 6 wiring provided.

HEATING & INSULATION

- Nibe Exhaust Heat Pump System in all flats.
- ASHP System in all houses.
- Thermostatically controlled radiators.
- Double glazed, factory painted Anthracite Grey Colour Aluminium windows with security locking mechanisms.
- Double glazed, factory painted Anthracite Grey Colour Aluminium patio doors (ground floor) with security locking mechanisms.

EXTERNAL

- Landscaped communal grounds.
- External lighting to terraces.
- Paved terraces.
- Outside water tap.

BATHROOMS

- White sanitaryware including concealed cistern, WCs, baths and sinks.
- Resin shower trays with glass enclosure.
- Wall mounted vanity unit with integrated storage under sinks.
- Contemporary chrome taps.
- Milano Shower Mixer valves.
- Full height tiling to all bathrooms.
- Fitted mirror above sink.
- Chrome heated towel rail.

PEACE OF MIND

- All properties will come with Global Home Warranties 10-year structural warranty.

FOR ENQUIRIES PLEASE CONTACT:



**KNIGHT FRANK
NEW HOMES**

D: +44 (0)20 3925 9873
E: Newhomes@knightfrank.com

55 Baker Street
London,
W1U 8AN,
United Kingdom

ABOUT THE DEVELOPER



Farleigh is a privately-owned development and investment company based in London, founded in 2016. The company has financed and developed numerous schemes across the UK within a variety of sectors, including residential, student and commercial.

Farleigh is renowned for the quality and attention to detail it brings to every property project and Tower Bridge Mews embodies all the hallmarks that underpin the growing reputation of this unique company.

FARLEIGHPROPERTY.COM

This document is not intended to be legally binding between the parties and should not be construed as an offer nor part of one. You should not rely on statements by Knight Frank LLP in the particulars or by word of mouth or in writing as being factually accurate about the property, its condition or its value. Neither Knight Frank LLP nor any joint agent has any authority to make any representations about the property or development and accordingly any information given is entirely without responsibility on the part of the agents, sellers or lessors. This document has been provided for general information only and must not be relied upon in any way. Although high standards have been used in the preparation of the information, analysis, views and projections presented in this document, they are not warranted and intending purchasers/lessees should satisfy themselves as to the correctness of information given. Knight Frank LLP does not owe a duty of care to any person in respect of the contents of this document, and does not accept any responsibility or liability whatsoever for any loss or damage resultant from any use of, reliance on or reference to the contents of this document. The content of this document does not necessarily represent the views of Knight Frank LLP in relation to any particular properties or projects. Any computer generated images, plans, drawings, accommodation schedules, specification details, measurements or other information provided about the property or location is subject to change. All imagery is indicative of the quality and style of the development and may not represent the actual fittings and furnishings at this development. Any reference to alterations to the property or use of any part of the development is not a statement that any necessary planning, building regulations or other consent has been obtained. These matters must be verified by any intending purchaser/lessee. This document must not be amended in any way, whether to change its content, to remove this notice or any Knight Frank LLP insignia, or otherwise. Reproduction of this document in whole or in part is not permitted without the prior written approval of Knight Frank LLP to the form and content within which it appears. © Knight Frank LLP 2022. Knight Frank LLP is a limited liability partnership registered in England with registered number OC305934. Our registered office is 55 Baker Street, London, W1U 8AN, where you may look at a list of members' names.

